

This on-line version of the annual report is accessible only in full page format. Page numbers will differ from the printed report.

**Community Corrections
In
Colorado**

ANNUAL STATISTICAL REPORT
FISCAL YEAR 2001 -2002

April, 2003

**OFFICE OF COMMUNITY CORRECTIONS
DIVISION OF CRIMINAL JUSTICE
DEPARTMENT OF PUBLIC SAFETY**

COMMUNITY CORRECTIONS IN COLORADO

Annual Statistical Report
Fiscal Year 2001-2002

Prepared by:
Christine Schmid

April, 2003

DIVISION OF CRIMINAL JUSTICE
Raymond T. Slaughter
Division Director

DEPARTMENT OF PUBLIC SAFETY
C. Suzanne Mencer
Executive Director

COLORADO COMMUNITY CORRECTIONS ADVISORY COUNCIL
Judge O. John Kuenhold, Chairman

TABLE OF CONTENTS

| | |
|---|----|
| Introduction | 1 |
| Who is Sentenced to Community Corrections? | 2 |
| Intake Status | 2 |
| Demographics | 2 |
| Criminal History | 4 |
| For What Types of Offenses are Community Corrections Offenders Currently Serving Time? | 5 |
| What Services Do Offenders Receive While in Community Corrections? | 7 |
| How Is A Person Terminated From Community Corrections? | 9 |
| Do Offenders Offset Costs of Community Corrections Programs? | 12 |
| Do Community Corrections Offenders Work? | 13 |
| Do Community Corrections Offenders Pay Taxes? What about Restitution? | 13 |
| What Is The Average Length of Stay for Community Corrections Offenders? | 15 |
| Women In Community Corrections. | 16 |
| Summary | 18 |
| Appendix A | 19 |
| Appendix B | 22 |
| Appendix C | 33 |
| Advisory Council Members | 35 |

INTRODUCTION

The following report is a statistical summary of all Community Corrections offenders who terminated residential placement from Community Corrections facilities during fiscal year 2001-02 (July 1, 2001 to June 30, 2002). The data used to compile this report are from a database maintained by the Colorado Department of Public Safety, Division of Criminal Justice (DCJ). This database has been maintained since July, 1986, when the administration of Community Corrections was placed under DCJ. Data is collected on termination forms (see Appendix A) that are completed by Community Corrections program staff when an offender is discharged from the residential portion of the program. Currently, data is not collected on non-residential Diversion, IRT or DART offenders. Data collected during fiscal year 2002-03 will include non-residential, and IRT programs.

The forms are reviewed for general accuracy and completeness upon receipt by the DCJ. The DCJ relies on program staff to insure accuracy of the data. A sample of termination forms is reviewed for accuracy during on-site audits of Community Corrections programs.

Some issues arise when analyzing termination information of this nature. Because the report focuses on people who terminated, data may be biased, especially when viewing a one-year time frame. The data may over-represent offenders who terminate after short lengths of stay, and under-represent offenders who stay for longer periods of time. Furthermore, the data may not represent the characteristics of the current population since information is only collected after an offender terminates from residential placement.

This report focuses on Community Corrections as a statewide entity, not on individual programs. The report breaks down the termination population into two main categories: Diversion offenders (including condition of probation) and Transition offenders (including Condition of Parole and ISP offenders). Definitions of Diversion and Transition offenders are provided on page three. An “overall” category combines the two populations.

There are three (3) jail based programs that are not included as part of this analysis because they are short-term placements for offenders awaiting bed space in a traditional Community Corrections facility. By including these placements in this analysis, the offenders would be counted twice. Also excluded are the community-based

Intensive Residential Treatment (IRT) programs and the Denver Drug Abuse Residential Treatment (DART) program. These programs are short-term intensive drug treatment programs and are not truly representative of the actual Community Corrections system. To include the IRT and DART terminations, would also result in multiple counting of offenders.

Community Corrections in FY 2001-02 was funded for **1260** residential Transition and Parole beds (including **78** IRT beds, **28** Boot Camp beds and **10** Sex Offender beds) and for **1262** residential Diversion beds. Additionally, **1230** slots for non-residential Diversion were funded.

Most of the data presented in this report are in graph form. The data can also be located in Appendix B, in table form. For those graphs where only percentages are represented, the actual numbers can also be found in Appendix B. Tables and graphs where actual numbers are presented within the body of the report are not listed in Appendix B.

Appendix C of this report lists each program individually as well as numbers of offenders that were terminated during the year based on the number of termination forms received from the program for the fiscal year 2001-2002.

Note that in several of the tables where ranges are specified, the measure of “median” (the center number in a range) is used to describe the data. This measure is used to represent the average because it is not as sensitive to extreme ranges as the mean.

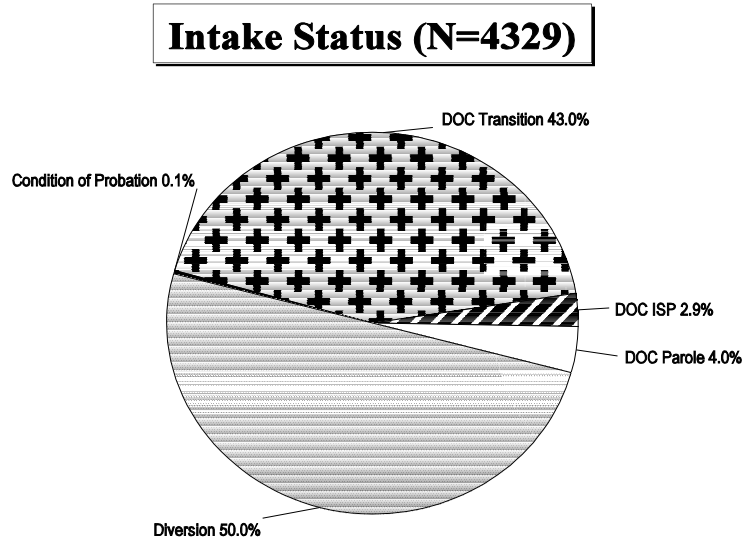
Source: DCJ Community Corrections Termination Forms & Daily Census, Fiscal Year 2001-02.

***The number of cases will vary throughout this report due to missing data.**

WHO IS SENTENCED TO COMMUNITY CORRECTIONS?

Intake Status

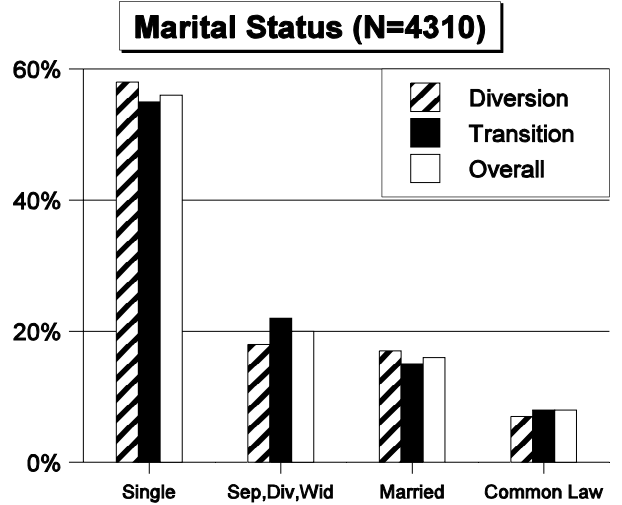
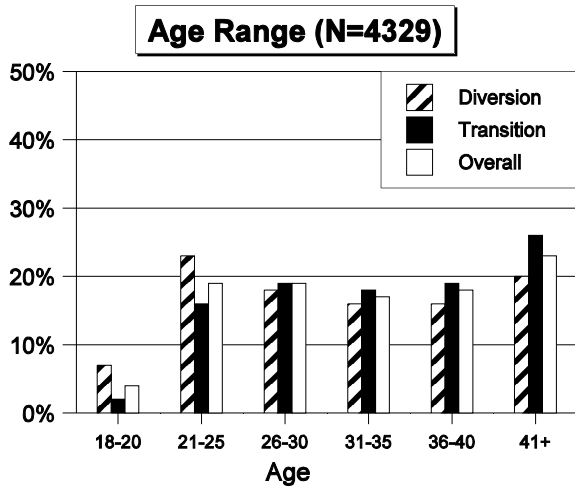
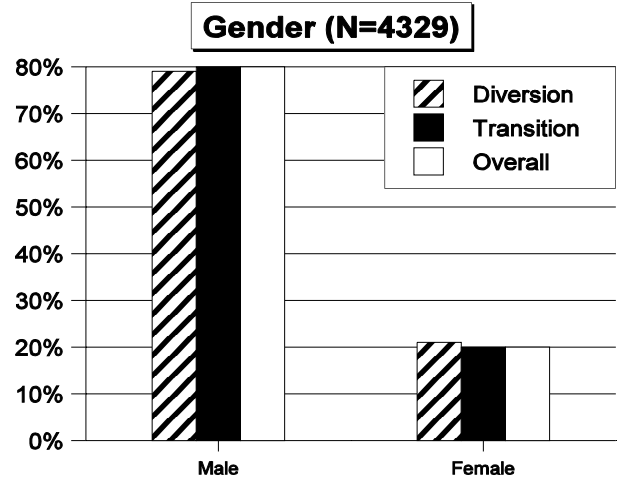
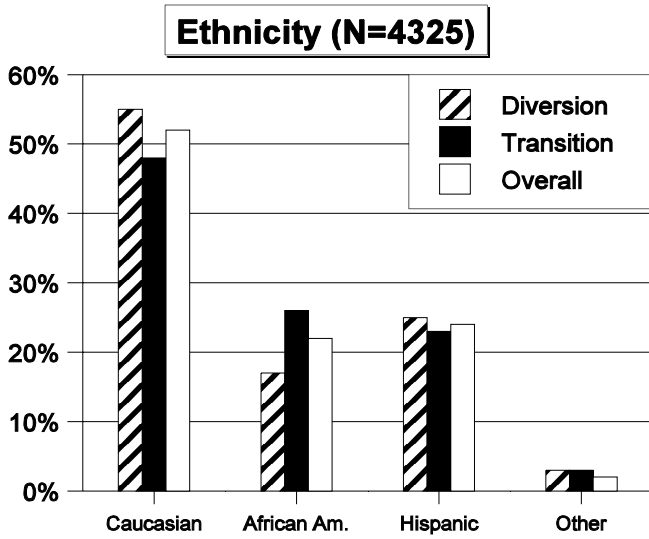
Community Corrections serves adult offenders who have been convicted of felony offenses. There are two major groups of Community Corrections offenders: Diversion and Transition. Diversion offenders are sentenced directly by the courts or may be sentenced as a condition of probation for up to 30 days. Transition and Parole offenders are referred from the Department of Corrections as a means of allowing an offender to Transition back into the community after prison incarceration. In FY 2001-02, 50% of all Community Corrections offenders were Diversion offenders and 49.9% were Department of Corrections offenders; as presented in the illustration below.



(Illustration 1, Reference Table 1, App. B)

Demographics

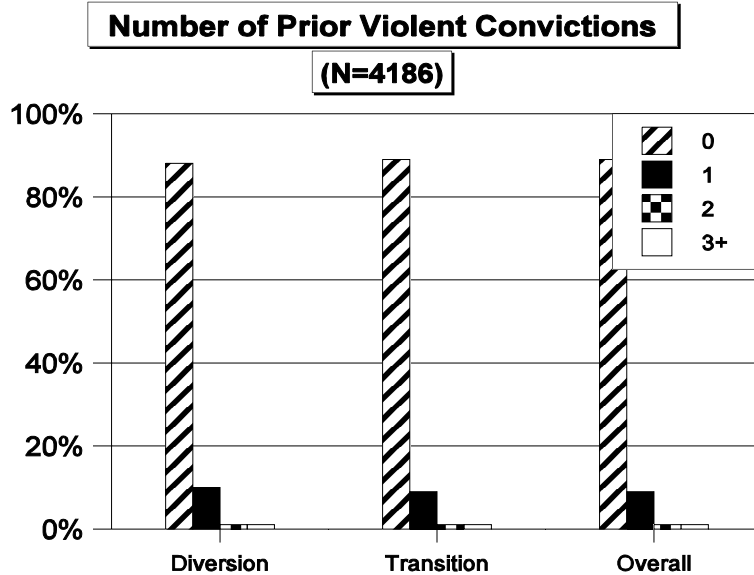
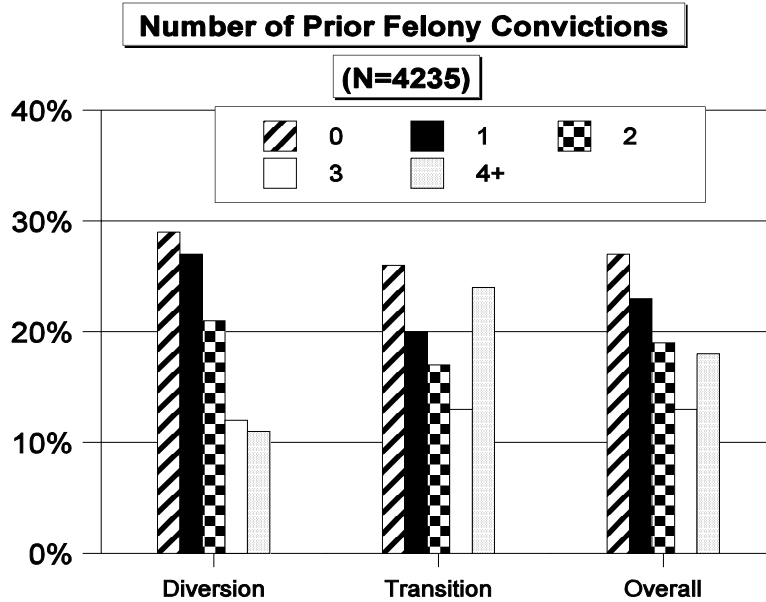
The profile of the “typical” Community Corrections client has not changed much in the past six years. The “typical” diversion client was 21-25 years of age, whereas the typical transition offender was at least 41 years of age. Overall offenders are unmarried, male, and Caucasian. As shown in following illustrations, 52% of Community Corrections offenders were Anglo, 22% were African American, and 24% were Hispanic. Also illustrated, 80% were males, 59% were under 35 years old and 76% were unmarried (56% were single and 20% were separated, divorced or widowed).



(Illustrations 2-5, Reference Tables 2A, 2B, 2C & 2D, App. B)

Criminal History

The graphs on page 7 indicate that **27%** of all Community Corrections offenders had no prior felony convictions. The proportion of offenders with no criminal history records was higher among Diversion offenders than it was for Transition offenders. Twenty-nine (**29%**) of Diversion offenders had no prior felony convictions, compared to **26%** of Transition offenders. Those with lengthy criminal histories (three or more prior felony convictions) made up **23%** of the Diversion population and **37%** of the Transition population. Eleven percent (**11%**) of the overall population had prior violent convictions.



(Illustrations 6 & 7, Reference Table 3 & 4, App. B)

The *Criminal History Score* (Mande, 1986) is a composite score that reflects the seriousness of an offender's criminal past. Functionally, it is a value derived from a weighted combination of the six variables defined below. The number of occurrences for each item is multiplied (**x**) by the weight (in parentheses), totaled, and then collapsed into scores of zero through four.

- Number of juvenile adjudications **x** (.5)
- Number of juvenile commitments **x** (1)
- Number of adult prior felony convictions **x** (1)
- Number of adult prior violent arrests **x** (1.5)
- Number of adult probation revocations **x** (.75)
- Number of adult parole revocations **x** (2)

The *Criminal History Score* used in this report is a **proxy** of the criminal history measurement. The true criminal history measurement above, requires adult violent **arrests** where the proxy in this report uses adult violent **convictions**.

The *Criminal History Score* was found to be statistically related to both program failure and program infractions in a research project conducted by English and Mande¹. In the files studied, it was found that the higher the score, the more frequently program infractions occurred.

Table 5 compares *Criminal History Scores* for FY 2001-02 and the previous fiscal year. The average criminal history score for Diversion offenders was **2.48**, up from last year's 2.39. The average criminal history score for Transition offenders was higher than the Diversion score at **2.81**, down from last year's 2.92. The average overall score was **2.64**, consistent with last year's 2.64.

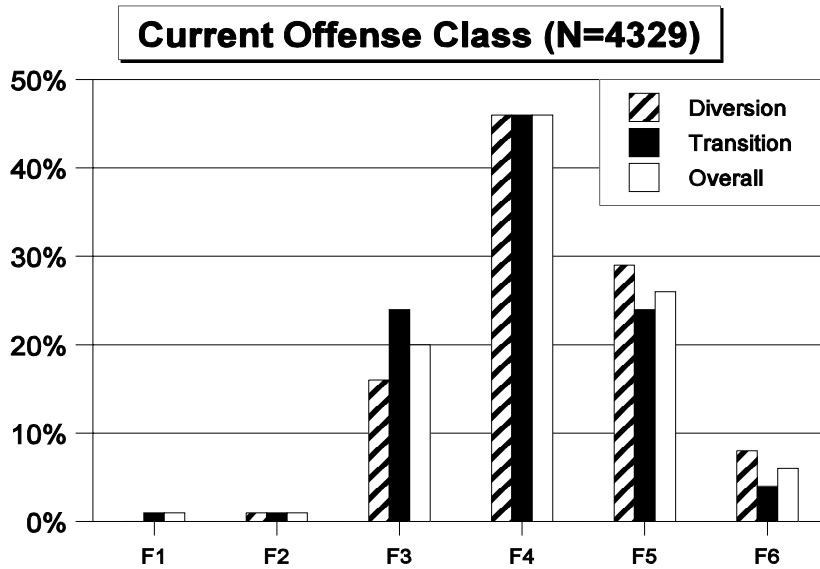
Table 5
Criminal History Scores (N=4033)

| | Diversion | | Transition | | Overall | |
|--------|-----------|----------|------------|----------|----------|----------|
| | FY 00-01 | FY 01-02 | FY 00-01 | FY 01-02 | FY 00-01 | FY 01-02 |
| Mean | 2.39 | 2.48 | 2.92 | 2.81 | 2.64 | 2.64 |
| Median | 3.0 | 3.0 | 4.0 | 4.0 | 3.0 | 3.0 |

FOR WHAT TYPES OF OFFENSES ARE COMMUNITY CORRECTIONS OFFENDERS SERVING TIME?

Most Community Corrections offenders in FY 2001-02 were serving sentences for non-violent, lower-level felony offenses. The most common types of offenses committed by both Diversion and Transition offenders were possession and distribution of controlled substances, theft and burglary. Eighty-three percent (**83%**) of the Diversion offenders, as well as **74%** of the Transition offenders, were serving sentences for either a class 4, 5 or 6 felony as shown in the illustration below.

¹Kim English & Mary Mande, "Community Corrections in Colorado: Why Do Some Succeed and Others Fail?" Colorado Department of Public Safety, Division of Criminal Justice, 1991.

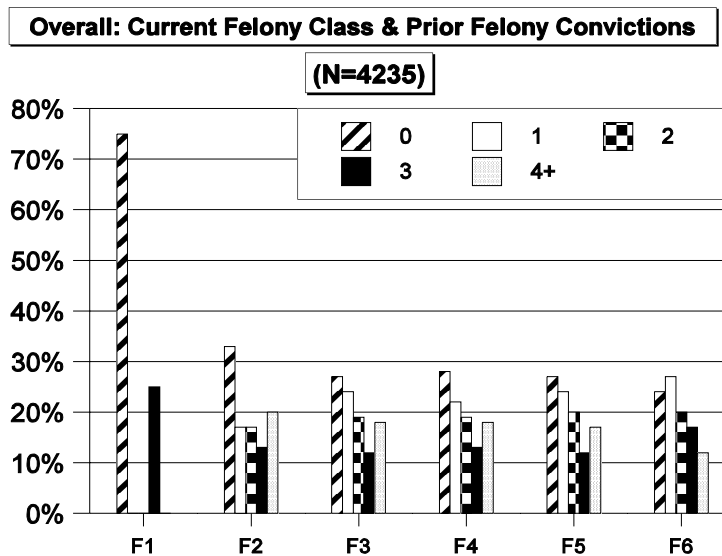


(Illustration 8, Reference Table 6, App. B)

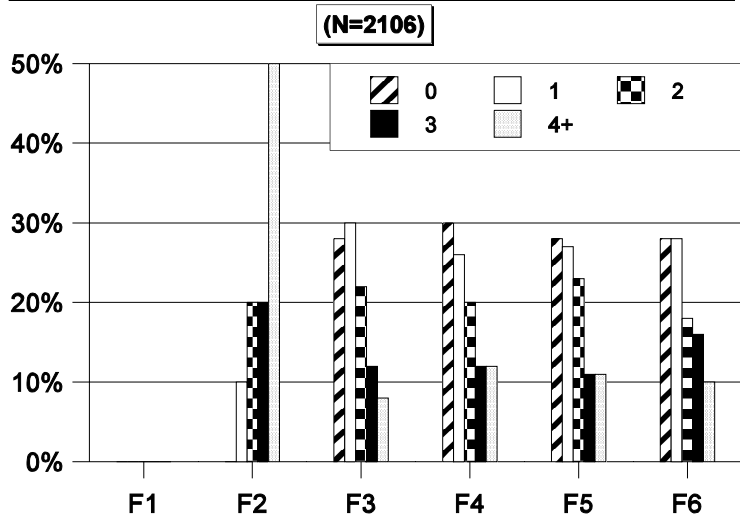
The following three graphs illustrate the number of prior felony convictions by current felony class of the offender population. These illustrations distinguish Diversion offenders from Transition offenders by their criminal history and level of felony class on the current conviction.

For Diversion offenders who were convicted of class 3 felonies **72%** had at least one prior felony conviction. Twenty-four percent (**24%**) of Diversion offenders presently convicted of class 4 felonies and **22%** of those convicted of class 5 felonies had three or more prior felony convictions.

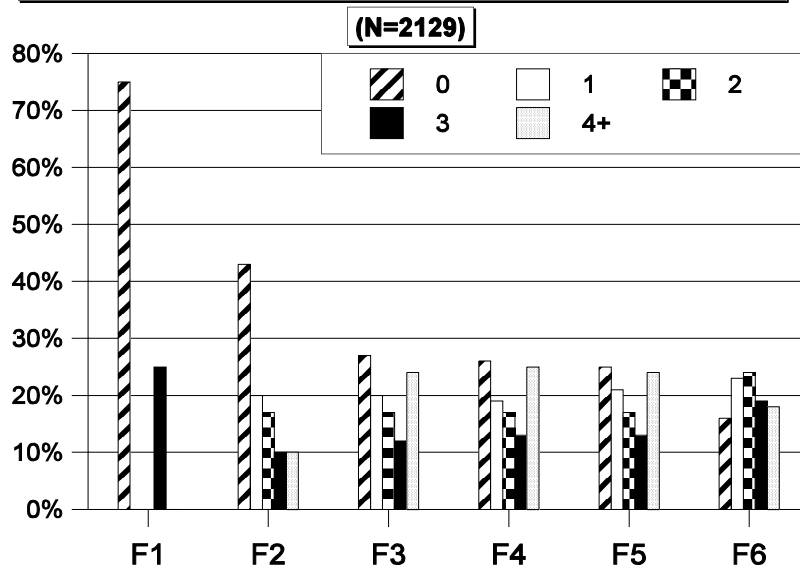
In contrast, of those Transition offenders serving time for a class 3 felony, **73%** had at least one prior felony conviction. Thirty-eight percent (**38%**) of Transition offenders presently convicted of class 4 felonies and **37%** of those convicted of class 5 felonies had three or more prior felony convictions.



Diversion: Current Felony Class & Prior Felony Convictions



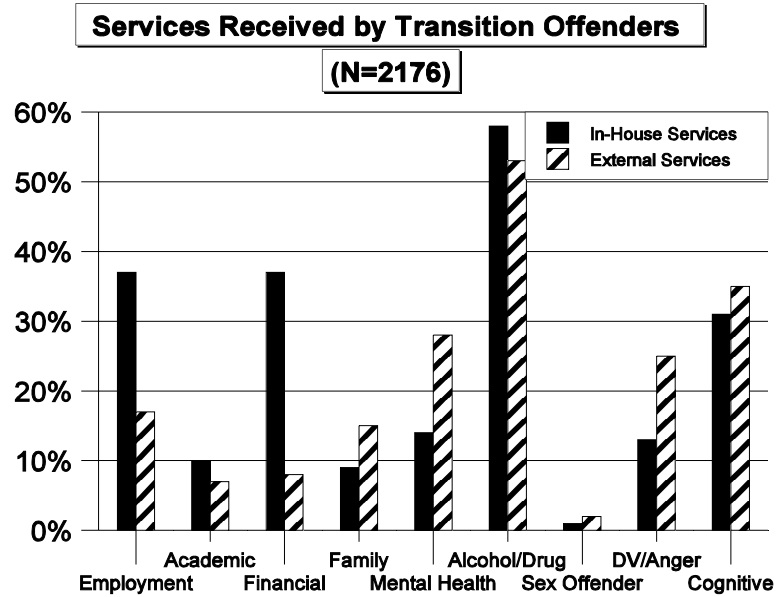
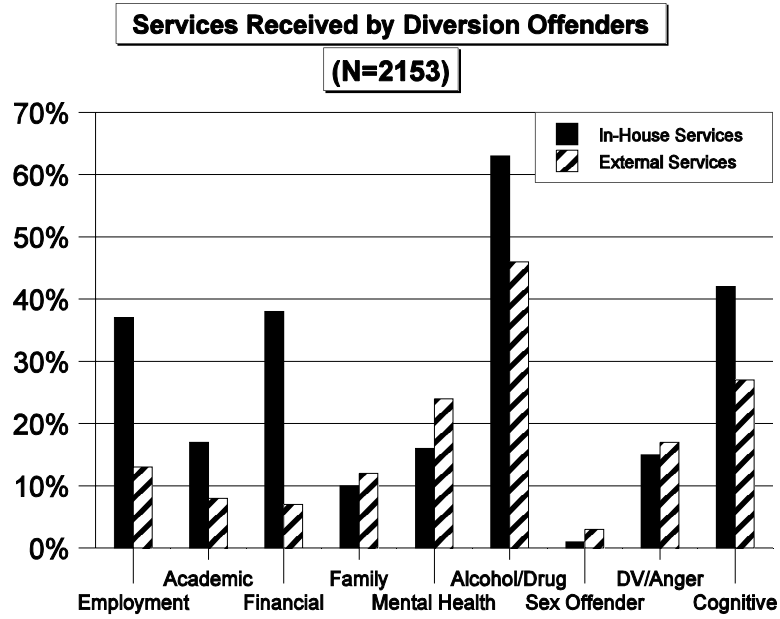
Transition: Current Felony Class & Prior Felony Convictions



(Illustration 9-11, Reference Tables 7, 8 & 9, App. B)

WHAT SERVICES DO OFFENDERS RECEIVE WHILE IN COMMUNITY CORRECTIONS?

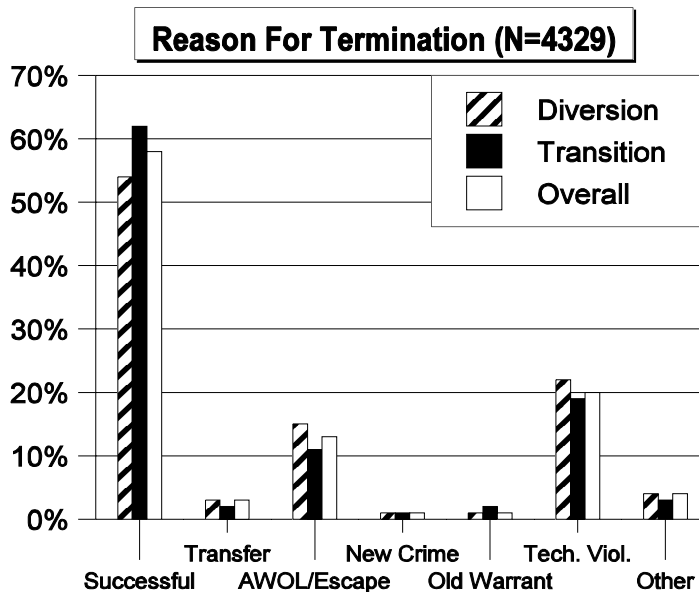
Community Corrections programs provide a variety of services to the offenders. These services generally include case management, life skills, drug and alcohol education and treatment, money management assistance, and educational and vocational guidance. Offenders can qualify for special assistance if they are in financial need and meet defined criteria through the Special Offender Services Fund, that is administered by DCJ. Offenders are responsible for paying for services that are not provided within the daily per diem by the program or services received outside the program. Illustrations 12 and 13 show which services were received both inside and outside the facility.



(Illustrations 12 & 13, Reference Tables 10A & 10B, App. B)

HOW IS A PERSON TERMINATED FROM COMMUNITY CORRECTIONS?

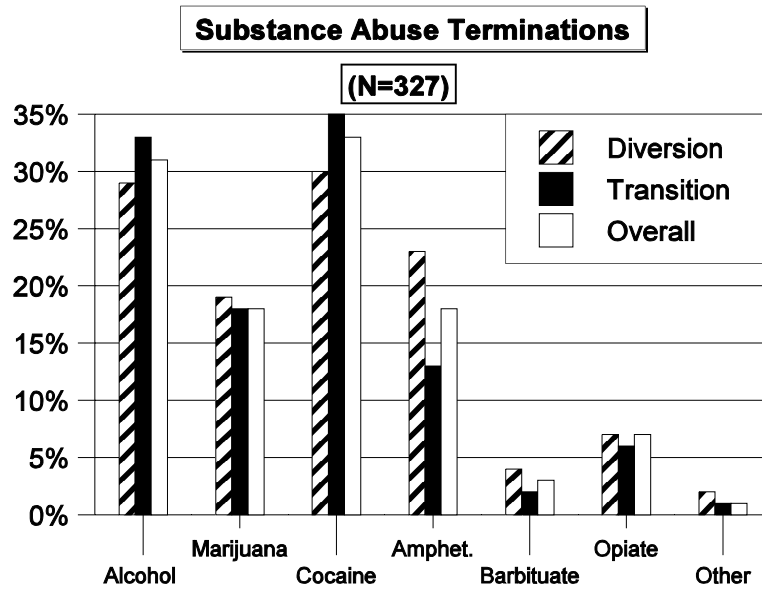
Offenders are terminated from Community Corrections residential programs when they complete the length of their sentence, transfer to more appropriate residential programs, progress to non-residential programs, or when they break predetermined rules. In FY 2001-02, **54%** of Diversion and **62%** of Transition offenders successfully completed residential placement. The rates of success decreased **4%** for Diversion and stayed the same for Transition populations from last year. Twenty-two percent (**22%**) of Diversion and **19%** of Transition offenders were terminated from Community Corrections as a result of technical rule violations. Overall terminations due to the commission of a new crime were less than **1%**. Termination data are presented in illustration 14.



(Illustration 14, Reference Table 11A, App. B)

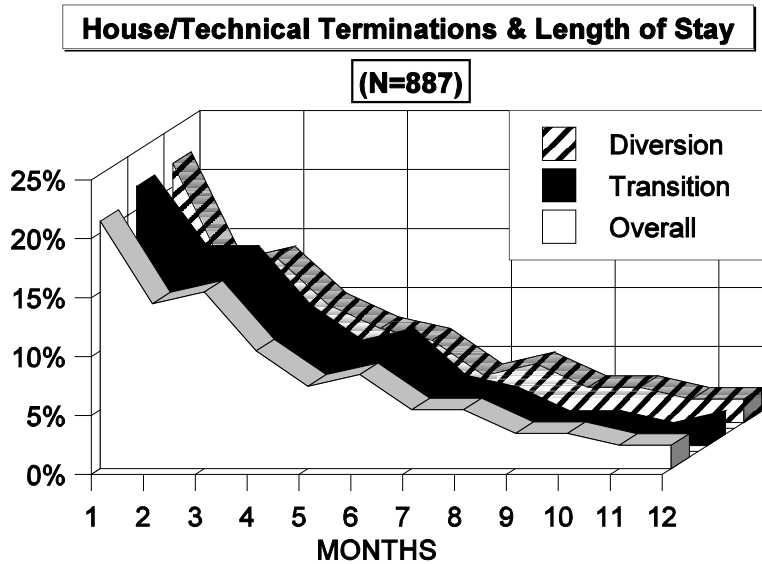
Terminations due to technical rule violations fall into two categories. One category consists of rules that reflect the offender's behavior and actions, i.e. disobeying a lawful order, unaccountable time while signed out of the facility, failure to follow the program plan, fighting in the facility, etc. The other category of technical violations consists of substance abuse while residing in the facility. Of the **887** offenders terminating due to house technical violations, **327 (37%)** were substance abuse terminations, while **560 (63%)** were behavioral or programmatic rule violations.

Illustration 15 shows the substance(s) abused that resulted in the termination. For both Diversion and Transition offenders, **cocaine** was the primary substance used, **30%** for Diversion and **35%** for Transition. The secondary substance abused by both types of offenders was **Alcohol (29%** for Diversion offenders and **33%** for Transition). The overall use of amphetamines increased by 3%. It is important to note that some tests were positive for more than one substance.



(Illustration 15, Reference Table 11B, App. B)

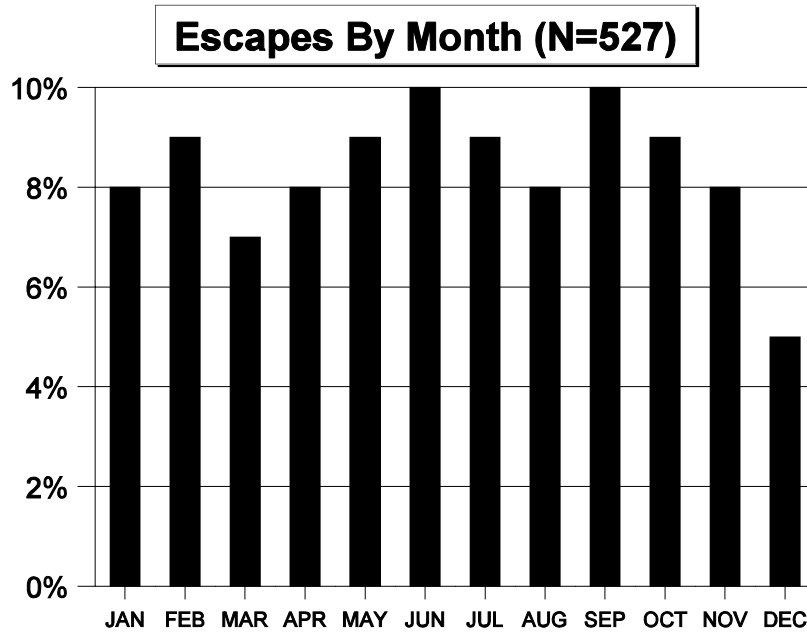
Illustration 16 shows the **length of stay** for offenders who terminated because of **house rule infractions**. As this chart indicates, the first three months in a program are the most critical for offenders adjusting to residential placement. Fifty percent (50%) of offenders who terminated because of house rule infractions, terminated within the first 90 days.



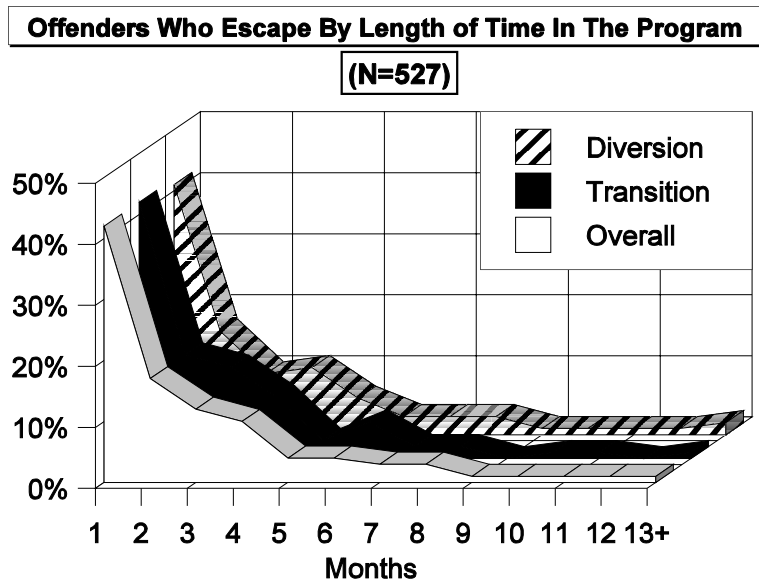
(Illustration 16, Reference Table 12, App. B)

The overall rate of terminations for escape was **12%**. The termination rate due to escape was **14%** for Diversion offenders and **10%** for Transition offenders.

Offenders escaped most frequently during **June and September** as illustrated below. Illustration 18 shows the **length of stay** for offenders who **escape** from Community Corrections. Illustration 18 indicates that the first sixty days hold the highest risk for offenders who escape from the program, with **42%** of the escapes occurring in the first **30 days** and **59%** occurring within the first **60 days**.



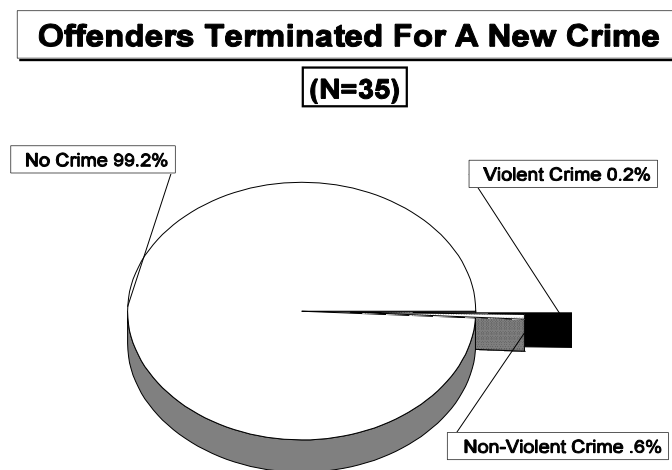
(Illustration 17, Reference Table 13, App. B)



(Illustration 18, Reference Table 14, App. B)

For the majority of escapes in FY 2001-2002, the profile of the offender was a single (61%), Caucasian (43%), male (78%), less than 30 years old (53%). This offender had a high school diploma or GED (46%), was convicted of a class 4 or 5 felony (78%), and was serving time for a drug related offense (38%), theft (16%), or burglary (12%). It is also important to note that the majority of offenders who escaped, were arrested for the first time at the age of 18 or younger (64%), had prior felony convictions (74%), and had prior probation supervision (69%) with more than 65% ending in revocation. Diversion offenders made up 56% of the escapes, while Transition and parole offenders made up the remaining 44%.

Of all the offenders terminating from Community Corrections, less than 1% (35) were terminated for the commission of a new crime (as measured by a new arrest). Illustration 19 shows the percentage breakdown of offenders who committed new crimes (excluding escape), either violent or non-violent. Eighty percent (80%) of the new crimes were non-violent. Three of the violent crimes were committed by Diversion offenders and four were committed by Transition offenders.



(Illustration 19, Reference Table 15, App. B)

DO OFFENDERS OFFSET COSTS OF COMMUNITY CORRECTIONS PROGRAMS?

While living in Community Corrections facilities, offenders are expected to work and pay room and board. Programs can charge offenders up to \$13 per day in subsistence fees. Actual collections are based on earnings and offenders’ ability to pay. Table 16 shows that the median daily subsistence cost that offenders paid in the program in FY 2001-02 was \$12.24 for Diversion offenders, and \$11.95 for Transition offenders.

**Table 16
Median Daily Subsistence
Paid By Residents (For Those Who Paid)**

| | Diversion | Transition | Overall |
|--------|-----------|------------|---------|
| Mean | \$11.02 | \$11.03 | \$11.03 |
| Median | \$12.24 | \$11.95 | \$12.08 |
| N | 1745 | 1766 | 3511 |

DO COMMUNITY CORRECTIONS OFFENDERS WORK?

Eighty-two percent (**82%**) of offenders who were terminated in FY 2001-02 were employed for some period during their residency in Community Corrections. Table 17 shows the median monthly income for Diversion offenders who were employed was **\$894** per month (down from \$927 last year). In addition, employed Transition offenders earned a median monthly income of **\$979** (down from \$1013 last year).

Table 17
Monthly Income For Community Corrections Offenders
Who Were Employed

| | Diversion | Transition | Overall |
|--------|------------|------------|------------|
| Mean | \$1001 | \$1044 | \$1023 |
| Median | \$894 | \$979 | \$935 |
| Range | \$0 - 9696 | \$0 - 5491 | \$0 - 9696 |
| N | 1653 | 1750 | 3403 |

DO COMMUNITY CORRECTIONS OFFENDERS PAY TAXES? WHAT ABOUT RESTITUTION?

Community Corrections offenders who work also pay state and federal taxes and, when ordered, restitution. Tables 18 and 19 show the range, median, mean and number of Diversion and Transition offenders who paid state and federal taxes while participating in Community Corrections programs. Table 18 shows the median state taxes paid on money earned while in residential Community Corrections was **\$115** for Diversion offenders and **\$97** for Transition offenders. As is true with all taxpayers, federal taxes paid were greater when compared to state taxes. Diversion offenders' median contribution was **\$299** and Transition offenders' average federal tax withholding was **\$247**. An overall sum of **\$550,015** was paid in state taxes and a sum of **\$1,531,319** was paid in federal taxes by Community Corrections offenders over the length of their stay in residential placement.

Table 18
State Taxes Paid By Community Corrections Offenders

| | Diversion | Transition | Overall |
|--------|------------|------------|------------|
| Mean | \$207 | \$169 | \$188 |
| Median | \$115 | \$97 | \$104 |
| Range | \$1 - 2616 | \$1 - 5754 | \$1 - 5754 |
| N | 1441 | 1477 | 2918 |
| Sum | \$299,041 | \$250,974 | \$550,015 |

Table 19
Federal Taxes Paid By Community Corrections Offenders

| | Diversion | Transition | Overall |
|--------|-------------|--------------|--------------|
| Mean | \$567 | \$471 | \$519 |
| Median | \$299 | \$247 | \$270 |
| Range | \$1 - 7,150 | \$1 - 22,861 | \$1 - 22,861 |
| N | 1463 | 1485 | 2948 |
| Sum | \$830,463 | \$700,856 | \$1,531,319 |

Restitution, which is not ordered in all cases, was paid by **1322 (61%)** Diversion offenders who terminated this fiscal year and by **1280 (58%)** Transition offenders. Table 20 shows the median amount paid was **\$372** by Diversion offenders and **\$300** by Transition offenders. An overall sum of **\$1,547,743** was paid in restitution by offenders in residential placement (up \$22,284 from last year's \$1,525,459). Diversion offenders paid **\$859,342** of that sum, while Transition offenders paid the remaining **\$688,401**.

Table 20
Restitution Paid by Community Corrections Offenders

| | Diversion | Transition | Overall |
|--------|------------|------------|-------------|
| Mean | \$651 | \$537 | \$594 |
| Median | \$372 | \$300 | \$340 |
| Range | \$4 - 6550 | \$3 - 3869 | \$3 - 6550 |
| N | 1322 | 1280 | 2602 |
| Sum | \$859,342 | \$688,401 | \$1,547,743 |

PLEASE NOTE: Restitution amounts shown in this chart may include fines and other miscellaneous court-ordered costs.

WHAT IS THE AVERAGE LENGTH OF STAY IN RESIDENTIAL PLACEMENT?

Offenders reside in Community Corrections facilities during the first phase of such placements. Then, depending on the length of sentence or adjustment of the offender, the remainder of the sentence is completed under different types and levels of non-residential supervision. Forty-three percent (**43%**) of Diversion offenders discharged from residential programs were transferred to non-residential supervision in FY 2001-02, while **58%** of Transition offenders transferred to regular or ISP parole under the Department of Corrections. The remaining offenders either transferred to a different Community Corrections program, IRT, jail, prison or off supervision.

The average overall length of stay in Community Corrections increased by 5 days in the past year, from **169 to 174** days. Table 21 details the length of stay in residential Community Corrections in FY 2001-02.

The average length of stay for Diversion offenders who terminated Community Corrections in FY 2001-02 was almost six and a half months (**190 days**). The average length of stay for Diversion offenders who completed their residential placement successfully was eight months (**238 days**). For those who did not terminate successfully, the average length of stay was four and a half months (**132 days**).

The average length of stay for Transition offenders was almost five and a half months (**159 days**). The average length of stay for Transition offenders successfully completing residential placement was six and one half months (**192 days**), and for those terminating other than successfully, the average length of stay was almost three and one half months (**104 days**).

Table 21
Overall Length of Stay For Residential
Diversion and Transition Offenders (Days)

| | | Mean (Average) | N |
|------------|-----------------------|-------------------|------|
| Diversion | Successful Completion | 238 days | 1174 |
| | Other Terms | 132 days | 979 |
| | Overall | 190 days | 2153 |
| Transition | Successful Completion | 192 days | 1340 |
| | Other Terms | 104 days | 836 |
| | Overall | 159 days | 2176 |
| Overall | Successful Completion | 214 days | 2514 |
| | Other Terms. | 119 days | 1815 |
| | Overall | 174 days | 4329 |

WOMEN IN COMMUNITY CORRECTIONS

Over a period of several years, the female population in Community Corrections has increased. Female offenders made up **20 percent** of the Community Corrections population in FY 01-02. Four of the programs specialize in serving only female offenders. The data presented in this section represent the females in all community corrections programs.

Demographics

The profile of the “typical” female Community Corrections client was 31 years of age and higher, unmarried and Caucasian. Fifty-three percent (**53%**) of the females were Caucasian, **23%** were African American, and **22%** were Hispanic. The percentage of African Americans was higher in the female population (**23%**) than it was in the male population (**21%**). Conversely, the percentage of Hispanics in the female population (**22%**) was lower than it was in the male population (**25%**).

There were also some differences between females and males regarding their marital status. Approximately twenty-one percent (**21%**) of females and (**24%**) of males were either married or common law married. However, **29%** of females were divorced or widowed versus **18%** of males. Also, **50%** of females were single as compared to **58%** of males.

Females also had less formal education, a lower rate of employment, and had a lower monthly income than males. Only **50%** of females had a GED or high school diploma as compared to **58%** of males. At termination, only **78%** of females were employed as compared to **84%** of males. Females made an average monthly income of **\$712** versus **\$971** for males.

Criminal History

The most common types of offenses committed by both females and males were possession/distribution of controlled substances, theft and burglary. Fifty percent (**50%**) of females were convicted for drug-related offenses as compared to **38%** of males. Fifteen percent (**15%**) of males were convicted of burglary as compared to **5%** of females. Eleven percent (**11%**) of males were convicted of theft as compared to **20%** of females.

The average criminal history score for females increased from **2.50** to **2.67** this year. This score is now higher than that of males (**2.64**). Thirty percent (**30%**) of males had 3 or more prior felony convictions. Females having three or more prior felony convictions decreased from **31% last year to 29%** this year. Interestingly, more females were serving for more serious offenses than males. Sixty-seven (**67%**) of males versus **71%** (down from last year's 76%) of females were serving for class 4 or higher felonies.

Services Received

Generally, males and females received similar services in all areas of employment, academic, financial, family, mental health, alcohol and drugs, cognitive, and domestic violence/anger management. It was noteworthy that a higher percentage of females received in-house services as compared to males.

Termination Status

Females had higher rates of successful termination, slightly higher rates of escape, and lower rates of technical/house violations than males. Sixty percent (**60%**) of females successfully completed their supervision as compared to **57.5%** of males. Thirteen percent (**13%**) of females escaped versus **12%** of males. Nineteen percent (**19%**) of females terminated due to technical violations as compared to **21%** of males. The average length of stay for females was **168 days** as compared to **176 days** for males.

SUMMARY

During fiscal year 2001-02, **4329** offenders terminated from residential Community Corrections placement. The typical Community Corrections offender during this time period was between 21 and 30 years old, unmarried, Caucasian and male. Offenders either were serving direct sentences from the courts (**50%**) or were transitioning from the Department of Corrections to the community (**50%**). Seventy-two percent (72% = n-3128) of all offenders who terminated Community Corrections during this fiscal year were serving time for either a class 4 or class 5 felony.

In fiscal year 2001-02, the overall successful termination rate was **58%** (2514 offenders), consistent with a 58% successful terminations (2418 offenders) in FY 2000-01. Terminations resulting from the commission of a new offense was less than 1% for FY 2001-02. For offenders terminating unsuccessfully because of drug use, cocaine, alcohol, and marijuana, respectively, were the drugs of choice. Twelve percent (**527**) of the overall population escaped Community Corrections supervision. Fifty-nine percent (**59%**) of those who escaped did so in the first 60 days of placement.

Most of the offenders worked at some time while in residential Community Corrections, and earned a median monthly income of **\$935**. From these wages, most offenders paid room and board, state and federal taxes, and restitution, if so ordered.

The average length of stay for all offenders was almost 6 months; over seven months for those who successfully completed their residential placements and almost four months for those who terminated other than successfully.

Appendix A

| <p>28. A. Was a urine screen performed at intake? _____ 0 No 1 Yes</p> <p>B. Was it positive? _____ 0 No 1 Yes</p> <p>C. If yes, mark all that apply. 0 No 1 Yes _____ Alcohol _____ Marijuana _____ Cocaine _____ Amphetamine _____ Barbiturate _____ Opiate _____ Other</p> | <p>29.A. Was a urine screen performed at termination? _____ 0 No 1 Yes</p> <p>B. Was it positive? _____ 0 No 1 Yes</p> <p>C. If yes, mark all that apply. 0 No 1 Yes _____ Alcohol _____ _____ Marijuana _____ Cocaine _____ Amphetamine _____ Barbiturate _____ Opiate _____ Other</p> | <p>30. During residential placement, how many positive urine tests were recorded for the following drugs? (Only count new usage) If none, use "0". _____ Alcohol _____ Marijuana _____ Cocaine _____ Amphetamine _____ Barbiturate _____ Opiate _____ Other</p> | <p>31. List all services received while in residential placement. Include all services whether purchased or not. General services provided by the case manager should not be included. (Example: job search assistance / employment supervision or budgeting assistance). 0 No 1 Yes</p> <table border="0"> <thead> <tr> <th></th> <th style="text-align: center;">In-house</th> <th style="text-align: center;">External</th> </tr> </thead> <tbody> <tr><td>1. Employment Related</td><td style="text-align: center;">_____</td><td style="text-align: center;">_____</td></tr> <tr><td>2. Academic/Vocational</td><td style="text-align: center;">_____</td><td style="text-align: center;">_____</td></tr> <tr><td>3. Financial/Money Mgmt.</td><td style="text-align: center;">_____</td><td style="text-align: center;">_____</td></tr> <tr><td>4. Family/Marital/Accom.</td><td style="text-align: center;">_____</td><td style="text-align: center;">_____</td></tr> <tr><td>5. Mental Health Related</td><td style="text-align: center;">_____</td><td style="text-align: center;">_____</td></tr> <tr><td>6. Alcohol/Drug Related</td><td style="text-align: center;">_____</td><td style="text-align: center;">_____</td></tr> <tr><td>7. Sex Offender Related</td><td style="text-align: center;">_____</td><td style="text-align: center;">_____</td></tr> <tr><td>8. DV/Anger Related</td><td style="text-align: center;">_____</td><td style="text-align: center;">_____</td></tr> <tr><td>9. Cognitive Related</td><td style="text-align: center;">_____</td><td style="text-align: center;">_____</td></tr> </tbody> </table> | | In-house | External | 1. Employment Related | _____ | _____ | 2. Academic/Vocational | _____ | _____ | 3. Financial/Money Mgmt. | _____ | _____ | 4. Family/Marital/Accom. | _____ | _____ | 5. Mental Health Related | _____ | _____ | 6. Alcohol/Drug Related | _____ | _____ | 7. Sex Offender Related | _____ | _____ | 8. DV/Anger Related | _____ | _____ | 9. Cognitive Related | _____ | _____ |
|--|---|--|--|--|----------|----------|-----------------------|-------|-------|------------------------|-------|-------|--------------------------|-------|-------|--------------------------|-------|-------|--------------------------|-------|-------|-------------------------|-------|-------|-------------------------|-------|-------|---------------------|-------|-------|----------------------|-------|-------|
| | In-house | External | | | | | | | | | | | | | | | | | | | | | | | | | | | | | | | |
| 1. Employment Related | _____ | _____ | | | | | | | | | | | | | | | | | | | | | | | | | | | | | | | |
| 2. Academic/Vocational | _____ | _____ | | | | | | | | | | | | | | | | | | | | | | | | | | | | | | | |
| 3. Financial/Money Mgmt. | _____ | _____ | | | | | | | | | | | | | | | | | | | | | | | | | | | | | | | |
| 4. Family/Marital/Accom. | _____ | _____ | | | | | | | | | | | | | | | | | | | | | | | | | | | | | | | |
| 5. Mental Health Related | _____ | _____ | | | | | | | | | | | | | | | | | | | | | | | | | | | | | | | |
| 6. Alcohol/Drug Related | _____ | _____ | | | | | | | | | | | | | | | | | | | | | | | | | | | | | | | |
| 7. Sex Offender Related | _____ | _____ | | | | | | | | | | | | | | | | | | | | | | | | | | | | | | | |
| 8. DV/Anger Related | _____ | _____ | | | | | | | | | | | | | | | | | | | | | | | | | | | | | | | |
| 9. Cognitive Related | _____ | _____ | | | | | | | | | | | | | | | | | | | | | | | | | | | | | | | |
| <p>32. Fiscal Info: (round to nearest dollar, do not use decimals). Fill with 0's for n/a. <u>Ex. 00250 not 249.65</u></p> <p>a. Earnings: _____</p> <p>b. Federal taxes: _____</p> <p>c. State taxes: _____</p> <p>d. Subsistence: _____</p> <p>e. Restitution paid: _____</p> | <p>33. Was there any Prior: A. IRT? _____ B. Residential ComCor? _____ 0 No 1 Yes</p> | <p>34. Date Terminated from Residential Placement: _____ M M D D Y Y</p> | <p>35. Termination Reason? _____</p> <ol style="list-style-type: none"> 1. Successful Residential Completion 2. Transfer to other CC Program 3. Transfer to IRT 4. Escape (absent more than 24 hours) 5. AWOL for 24 hours or less 6. New Crime 7. Outstanding Warrant/Pending Case 8. House/Technical Violation 9. Reject after Accept? Why? _____ 0. Other _____ | | | | | | | | | | | | | | | | | | | | | | | | | | | | | | |
| <p>39. If your response to question #35 was "6, New Crime", list the most serious new offense below. Fill with "0" if not applicable. Offense Name: _____ Felony Class _____ DCJ Code _____</p> | <p>36. Was this a release from: A. Boot Camp? _____ B. Youthful Offender System? _____ 0 No 1 Yes</p> | <p>37. Does the current offense listed in question #16 qualify as a "Victim Notification" offense? _____ 0 No 1 Yes (Offenses listed in instructional manual)</p> | <p>38. Released to: _____</p> <ol style="list-style-type: none"> 1. Probation/Judicial ISP 2. DOC ISP 3. DOC Parole 4. Transfer to different ComCor Program or IRT Which one? _____ 5. DOC/Jail Incarceration 6. Continued to Non-Residential Status 7. Off supervision/Escape/Sentence Expired 8. 3/4 House or Electronic Home Monitoring 0. Other _____ | | | | | | | | | | | | | | | | | | | | | | | | | | | | | | |
| <p>40. If your response to question #35 was "8, House/Technical Violation," complete the following questions. A. Was it drug related? _____ 0 No 1 Yes B. If drug related, specify drug(s): _____ Alcohol _____ Barbiturate _____ Marijuana _____ Opiate _____ Cocaine _____ Other _____ Amphetamine C. If not drug related, what was the violation? _____</p> | | <p>Case Manager for this client (please print) _____ First Last</p> <p>Person completing this form (please print) _____ First Last</p> | | | | | | | | | | | | | | | | | | | | | | | | | | | | | | | |

Appendix B

TABLE 1
Intake Status

| Legal Status | % | N |
|------------------------|-----|------|
| Diversion | 50 | 2149 |
| Condition of Probation | .1 | 4 |
| DOC Transition | 43 | 1897 |
| DOC Parole | 4 | 171 |
| DOC ISP | 2.9 | 108 |
| TOTAL | 100 | 4329 |

TABLE 2A
Offender Characteristics: Ethnicity

| Race | Diversion | | Transition | | Overall | |
|------------------|-----------|------|------------|------|---------|------|
| | % | N | % | N | % | N |
| Caucasian | 55 | 1193 | 48 | 1063 | 52 | 2256 |
| African American | 17 | 366 | 26 | 566 | 22 | 932 |
| Hispanic | 25 | 534 | 23 | 501 | 24 | 1035 |
| Other | 3 | 58 | 3 | 44 | 2 | 102 |
| TOTAL | 100 | 2151 | 100 | 2174 | 100 | 4325 |

TABLE 2B
Offender Characteristics: Gender

| Sex | Diversion | | Transition | | Overall | |
|--------|-----------|------|------------|------|---------|------|
| | % | N | % | N | % | N |
| Male | 79 | 1690 | 80 | 1739 | 80 | 3429 |
| Female | 21 | 463 | 20 | 437 | 20 | 900 |
| TOTAL | 100 | 2153 | 100 | 2176 | 100 | 4329 |

TABLE 2C
Offender Characteristics: Age Range

| Age at Entry | Diversion | | Transition | | Overall | |
|--------------|-----------|------|------------|------|---------|------|
| | % | N | % | N | % | N |
| 18 - 20 | 7 | 144 | 2 | 34 | 4 | 178 |
| 21 - 25 | 23 | 482 | 16 | 341 | 19 | 823 |
| 26 - 30 | 18 | 393 | 19 | 409 | 19 | 802 |
| 31 - 35 | 16 | 345 | 18 | 393 | 17 | 738 |
| 36 - 40 | 16 | 354 | 19 | 427 | 18 | 781 |
| 41+ | 20 | 435 | 26 | 572 | 23 | 1007 |
| TOTAL | 100 | 2153 | 100 | 2176 | 100 | 4329 |

TABLE 2D
Offenders Characteristics: Marital Status

| Marital Status | Diversion | | Transition | | Overall | |
|----------------|-----------|------|------------|------|---------|------|
| | % | N | % | N | % | N |
| Single | 58 | 1232 | 55 | 1193 | 56 | 2425 |
| Married | 17 | 370 | 15 | 322 | 16 | 692 |
| Common Law | 7 | 142 | 8 | 174 | 8 | 316 |
| Divorced/Widow | 18 | 399 | 22 | 478 | 20 | 877 |
| TOTAL | 100 | 2143 | 100 | 2167 | 100 | 4310 |

TABLE 3
Criminal History of Community Corrections Clients

| # of Prior Adult Felony Convictions | Diversion | | Transition | | Overall | |
|-------------------------------------|-----------|------|------------|------|---------|------|
| | % | N | % | N | % | N |
| 0 | 29 | 601 | 26 | 558 | 27 | 1159 |
| 1 | 27 | 567 | 20 | 420 | 23 | 987 |
| 2 | 21 | 445 | 17 | 368 | 19 | 813 |
| 3 | 12 | 257 | 13 | 275 | 13 | 532 |
| 4+ | 11 | 236 | 24 | 508 | 18 | 744 |
| TOTAL | 100 | 2106 | 100 | 2129 | 100 | 4235 |

TABLE 4
Number of Prior Violent Convictions

| # of Prior Adult Violent Convictions | Diversion | | Transition | | Overall | |
|--------------------------------------|-----------|------|------------|------|---------|------|
| | % | N | % | N | % | N |
| 0 | 88 | 1846 | 89 | 1865 | 89 | 3711 |
| 1 | 10 | 206 | 9 | 188 | 9 | 394 |
| 2 | 1 | 28 | 1 | 25 | 1 | 53 |
| 3+ | 1 | 8 | 1 | 20 | 1 | 28 |
| TOTAL | 100 | 2088 | 100 | 2098 | 100 | 4186 |

TABLE 6
Current Offense Class

| Offense Class | Diversion | | Transition | | Overall | |
|---------------|-----------|------|------------|------|---------|------|
| | % | N | % | N | % | N |
| Felony 1 | 0 | 0 | <1 | 4 | <1 | 4 |
| Felony 2 | <1 | 11 | 1 | 31 | 1 | 42 |
| Felony 3 | 16 | 354 | 24 | 530 | 20 | 884 |
| Felony 4 | 46 | 995 | 46 | 1012 | 46 | 2007 |
| Felony 5 | 29 | 614 | 24 | 507 | 26 | 1121 |
| Felony 6 | 8 | 179 | 4 | 92 | 6 | 271 |
| TOTAL | 100 | 2153 | 100 | 2176 | 100 | 4329 |

TABLE 7
Current Felony Class & Prior Felony Convictions: Overall (N=4235)

| Felony Class | Number or Prior Felony Convictions | | | | |
|--------------|------------------------------------|-----------|-----------|-----------|-----------|
| | 0 | 1 | 2 | 3 | 4+ |
| 1 | 3 - 75% | 0 | 0 | 1 - 25% | 0 |
| 2 | 13 - 33% | 7 - 17% | 7 - 17% | 5 - 12% | 8 - 20% |
| 3 | 237 - 27% | 208 - 24% | 163 - 19% | 103 - 12% | 154 - 18% |
| 4 | 551 - 28% | 437 - 22% | 367 - 19% | 244 - 13% | 362 - 18% |
| 5 | 291 - 27% | 264 - 24% | 222 - 20% | 134 - 12% | 187 - 17% |
| 6 | 64 - 24% | 71 - 27% | 54 - 20% | 45 - 17% | 33 - 12% |
| TOTAL | 1159 - 27% | 987 - 23% | 813 - 19% | 532 - 13% | 744 - 18% |

TABLE 8
Current Felony Class & Prior Felony Convictions: Diversion (N=2106)

| Felony Class | Number or Prior Felony Convictions | | | | |
|--------------|------------------------------------|-----------|-----------|-----------|-----------|
| | 0 | 1 | 2 | 3 | 4+ |
| 1 | 0 | 0 | 0 | 0 | 0 |
| 2 | 0 | 1 - 10% | 2 - 20% | 2 - 20% | 5 - 50% |
| 3 | 95 - 28% | 104 - 30% | 76 - 22% | 40 - 12% | 28 - 8% |
| 4 | 291 - 30% | 251 - 26% | 198 - 20% | 119 - 12% | 118 - 12% |
| 5 | 166 - 28% | 161 - 27% | 137 - 23% | 68 - 11% | 68 - 11% |
| 6 | 49 - 28% | 50 - 28% | 32 - 18% | 28 - 16% | 17 - 10% |
| TOTAL | 601 - 29% | 567 - 27% | 445 - 21% | 257 - 12% | 236 - 11% |

TABLE 9
Current Felony Class & Prior Felony Convictions: Transition (N=2129)

| Felony Class | Number of Prior Felony Convictions | | | | |
|--------------|------------------------------------|-----------|-----------|-----------|-----------|
| | 0 | 1 | 2 | 3 | 4+ |
| 1 | 3 - 75% | 0 | 0 | 1 - 25% | 0 |
| 2 | 13 - 43% | 6 - 20% | 5 - 17% | 3 - 10% | 3 - 10% |
| 3 | 142 - 27% | 104 - 20% | 87 - 17% | 63 - 12% | 126 - 24% |
| 4 | 260 - 26% | 186 - 19% | 169 - 17% | 125 - 13% | 244 - 25% |
| 5 | 125 - 25% | 103 - 21% | 85 - 17% | 66 - 13% | 119 - 24% |
| 6 | 15 - 16% | 21 - 23% | 22 - 24% | 17 - 19% | 16 - 18% |
| TOTAL | 558 - 26% | 420 - 20% | 368 - 17% | 275 - 13% | 508 - 24% |

TABLE 10A Services Received by Diversion Clients (N=2153)

| Services | Received In-house | | Received Externally | |
|-----------------------|-------------------|------|---------------------|-----|
| | % | N | % | N |
| Employment Related | 37 | 787 | 13 | 290 |
| Academic/Vocational | 17 | 368 | 8 | 184 |
| Financial/Money Mgmt. | 38 | 825 | 7 | 152 |
| Family/Marital/Accom. | 10 | 224 | 12 | 273 |
| Mental Health Related | 16 | 353 | 24 | 516 |
| Alcohol/Drug Related | 63 | 1365 | 46 | 995 |
| Sex Offender Related | 1 | 29 | 3 | 72 |
| DV/Anger Related | 15 | 327 | 17 | 362 |
| Cognitive Related | 42 | 896 | 27 | 585 |

TABLE 10B Services Received by Transition Clients (N=2176)

| Services | Received In-house | | Received Externally | |
|------------------------|-------------------|------|---------------------|------|
| | % | N | % | N |
| Employment Related | 37 | 813 | 17 | 366 |
| Academic/Vocational | 10 | 208 | 7 | 147 |
| Financial/Money Mgmt. | 37 | 815 | 8 | 183 |
| Family/Marital Related | 9 | 197 | 15 | 321 |
| Mental Health Related | 14 | 309 | 28 | 612 |
| Alcohol/Drug Related | 58 | 1256 | 53 | 1152 |
| Sex Offender Related | 1 | 11 | 2 | 43 |
| DV/Anger Related | 13 | 287 | 25 | 537 |
| Cognitive Related | 31 | 691 | 35 | 772 |

TABLE 11A Reason For Termination

| Termination Reason | Diversion | | Transition | | Overall | |
|------------------------|-----------|------|------------|------|---------|------|
| | % | N | % | N | % | N |
| Successful Completion | 54 | 1174 | 62 | 1340 | 58 | 2514 |
| Transfer to CC Program | 1 | 23 | 1 | 29 | 1 | 52 |
| Transfer to IRT | 2 | 52 | 1 | 33 | 2 | 85 |
| AWOL | <1 | 8 | <1 | 7 | <1 | 15 |
| Escape | 14 | 297 | 10 | 230 | 12 | 527 |
| New Crime | <1 | 16 | <1 | 19 | >1 | 35 |
| Outstanding Warrant | <1 | 16 | 2 | 34 | 1 | 50 |
| House Tech Violation | 22 | 476 | 19 | 411 | 20 | 887 |
| Other | 4 | 91 | 3 | 73 | 4 | 164 |
| TOTAL | 100 | 2153 | 100 | 2176 | 100 | 4329 |

TABLE 11B Termination Due To Substance Abuse

| Drug Used Resulting In Termination | Diversion | | Transition | | Overall | |
|------------------------------------|-----------|-----|------------|-----|---------|-----|
| | % | N* | % | N* | % | N* |
| Alcohol | 29 | 50 | 33 | 52 | 31 | 102 |
| Marijuana | 19 | 32 | 18 | 28 | 18 | 60 |
| Cocaine | 30 | 51 | 35 | 55 | 33 | 106 |
| Amphetamine | 23 | 39 | 13 | 20 | 18 | 59 |
| Barbiturate | 4 | 6 | 2 | 3 | 3 | 9 |
| Opiate | 7 | 12 | 6 | 10 | 7 | 22 |
| Other | 2 | 4 | <1 | 1 | 1 | 5 |
| Actual Terminations For Drug Use | 7** | 171 | 7** | 156 | 7** | 327 |

* Some tests are positive for more than one drug.

** Represents the percentage of the total population indicated at column heading.

TABLE 12
Offenders Terminating Due To House/Technical Violations By
Months In The Program

| Months In Program | Diversion | | Transition | | Overall | |
|-------------------|------------|-----|------------|-----|------------|-----|
| | % | N | % | N | % | N |
| 1 or less | 22 | 101 | 22 | 89 | 21 | 190 |
| 2 | 13 | 61 | 16 | 66 | 14 | 127 |
| 3 | 14 | 69 | 16 | 64 | 15 | 133 |
| 4 | 10 | 47 | 11 | 45 | 10 | 92 |
| 5 | 8 | 40 | 8 | 33 | 7 | 73 |
| 6 | 7 | 33 | 9 | 35 | 8 | 68 |
| 7 | 4 | 18 | 5 | 21 | 5 | 39 |
| 8 | 5 | 24 | 4 | 18 | 5 | 42 |
| 9 | 3 | 16 | 2 | 8 | 3 | 24 |
| 10 | 3 | 14 | 2 | 9 | 3 | 23 |
| 11 | 2 | 10 | 1 | 5 | 2 | 15 |
| 12 | 2 | 9 | 2 | 8 | 2 | 17 |
| 13+ | 7 | 34 | 2 | 10 | 5 | 44 |
| TOTAL | 100 | 476 | 100 | 411 | 100 | 887 |
| MEAN | 5.3 months | | 4.1 months | | 4.8 months | |
| MEDIAN | 4.0 months | | 3.0 months | | 3.0 months | |

TABLE 13
Escapes By Month

| MONTH | Diversion | | Transition | | Overall | |
|-----------|-----------|-----|------------|-----|---------|-----|
| | % | N | % | N | % | N |
| January | 9 | 27 | 8 | 18 | 8 | 45 |
| February | 9 | 25 | 9 | 21 | 9 | 46 |
| March | 9 | 25 | 5 | 12 | 7 | 37 |
| April | 8 | 23 | 8 | 18 | 8 | 41 |
| May | 8 | 25 | 9 | 22 | 9 | 47 |
| June | 9 | 27 | 11 | 26 | 10 | 53 |
| July | 9 | 27 | 9 | 20 | 9 | 47 |
| August | 8 | 25 | 7 | 16 | 8 | 41 |
| September | 10 | 31 | 9 | 20 | 10 | 51 |
| October | 9 | 26 | 10 | 22 | 9 | 48 |
| November | 8 | 23 | 8 | 18 | 8 | 41 |
| December | 4 | 13 | 7 | 17 | 5 | 30 |
| TOTAL | 100 | 297 | 100 | 230 | 100 | 527 |

TABLE 14
 Offenders Terminating Due To Escape By Months In The Program

| Months In Program | Diversion | | Transition | | Overall | |
|-------------------|------------|-----|------------|-----|------------|-----|
| | % | N | % | N | % | N |
| 1 or less | 41 | 123 | 42 | 98 | 42 | 221 |
| 2 | 17 | 51 | 17 | 39 | 17 | 90 |
| 3 | 10 | 30 | 15 | 35 | 12 | 65 |
| 4 | 11 | 32 | 10 | 22 | 10 | 54 |
| 5 | 6 | 17 | 3 | 7 | 4 | 24 |
| 6 | 3 | 8 | 6 | 15 | 4 | 23 |
| 7 | 3 | 9 | 2 | 6 | 3 | 15 |
| 8 | 3 | 9 | 2 | 4 | 3 | 13 |
| 9 | 1 | 3 | 0 | 0 | 1 | 3 |
| 10 | 1 | 1 | 1 | 1 | 1 | 2 |
| 11 | 1 | 4 | 1 | 2 | 1 | 6 |
| 12 | 1 | 3 | 0 | 0 | 1 | 3 |
| 13+ | 2 | 7 | 1 | 1 | 1 | 8 |
| TOTAL | 100 | 297 | 100 | 230 | 100 | 527 |
| MEAN | 3.0 months | | 2.5 months | | 2.9 months | |
| MEDIAN | 2.0 months | | 2.0 months | | 2.0 months | |

TABLE 15
Client Terminations For A New Crime

| Termination Category | Diversion | | Transition | | Overall | |
|----------------------|-----------|------|------------|------|---------|------|
| | % | N | % | N | % | N |
| No Crime | 99.3 | 2137 | 99.1 | 2157 | 99.2 | 4294 |
| Non-Violent Crime | .6 | 13 | .7 | 15 | .6 | 28 |
| Violent Crime | .1 | 3 | .2 | 4 | .2 | 7 |
| TOTAL | 100 | 2153 | 100 | 2176 | 100 | 4329 |

Appendix C

**Number Of Offender Termination Forms
Received For FY 00-01
By Judicial District & Program**

JD #

| | | |
|-----------|---|-----|
| 1 | Community Responsibility Center (CRC) | 254 |
| 2 | CMI /Fox | 153 |
| | CMI/Columbine | 150 |
| | CMI/Clarkson | 68 |
| | Independence House / Federal (IHF) | 94 |
| | Independence House / Pecos (IHP) | 228 |
| | Independence House / Fillmore | 3 |
| | A.R.T.S.-Peer I | 130 |
| | A.R.T.S.- The Haven | 55 |
| | Tooley Hall | 175 |
| | Williams Street Center (WSC) | 210 |
| 4 | COMCOR, Inc. / Diversion Program | 226 |
| | COMCOR, Inc. / Transition Program | 195 |
| | Community Alternatives of El Paso County | 261 |
| 6 | Hilltop House (HTH) | 52 |
| 8 | Larimer County Community Corrections (LCCC) | 116 |
| 10 | Pueblo Community Correction Services, Inc. (CCSI) | 67 |
| | Minnequa Community Corrections (MCC) | 143 |
| 12 | San Luis Valley Community Corrections (SLVCC) | 100 |
| 14 | Correctional Alternatives Placement Services (CAPS) | 66 |
| 17 | Loft House (ACCP) | 70 |
| | Phoenix Center (ACCP) | 228 |
| 18 | Arapahoe County Residential Center (ACRC) | 182 |
| | Arapahoe Community Treatment Center (ACTC) | 214 |
| | Centennial Community Treatment Center (CCTC) | 214 |
| 19 | The Restitution Center (TRC) | 294 |
| 20 | Boulder Community Treatment Center (BCTC) | 112 |
| | Longmont Community Corrections Program (LCTC) | 105 |
| 21 | Mesa Community Corrections Program (MCCC) | 164 |

Community Corrections Advisory Council

O. John Kuenhold, Chairman
Senator Norma V. Anderson
Dennis Berry
Milton K. Blakey
Thomas A. Giacinti
Mike Holland
Judith Horose
Jeaneene E. Miller
Gerald Marroney
Maureen O'Brien
James J. Peters
Donald Van Pelt